

PowerStationWholesale.com



COMPANY PROFILE

PowerStation Wholesale is a R&D-oriented company. Upon the establishment in 2014, we have been dedicating to one-stop solution with innovation as the core and production, sales as well as service as the vital force. We offer a range of products and services, including energy storage power supplies, power energy, photovoltaic inverters, house hold energy storage devices, micro inverse technology and more. The belief "Innovation Changes the Future" leads our products to make people's life better.

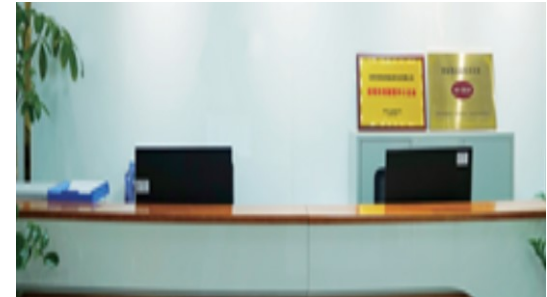
We firmly believe that qualified products come from life and go back to life again. All of our products are self-designed, produced independently and welcomed by many brands in different countries around the world, where warehouses and after-sale service centers are in place to fulfill one-stop service to better serve our clients.



ZHEJIANG DEHONG GROUP



ZHEJIANG TREWADO FACTORY



SHENZHEN R&D CENTER



PROFESSIONAL TEST EQUIPMENT

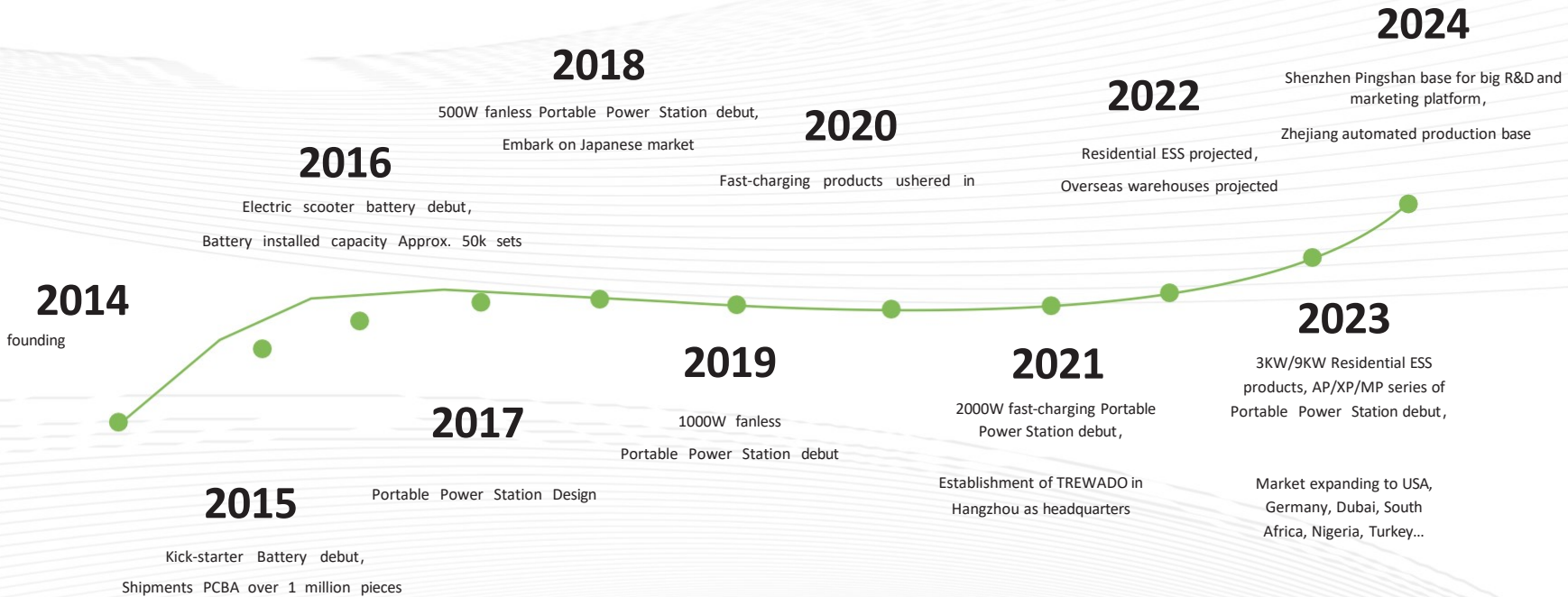


SEMI-AUTOMATIC ASSEMBLY LINE



TEAM CULTURE

MILESTONES



CERTIFICATES



PSE



UL



CB



CE



RoHS



ETL



UN38.3



MSDS



Sea



Air Transportation



FCC



ISO9001



KCC



Appearance Patents



New Patents

01

Portable Power Station



AP series Power Station

AP300 P400 A



Common equipment

MacBook Pro (64Wh)
approx 3 times

iPad Pro (29Wh)
approx 8 times

Phone (4000mAh)
approx 16 times

Drone (40Wh)
approx 5 times

Fan (50W)
approx 3Hs

Car Fridge(50W)
approx 3Hs

Camping light(10W)
approx 19Hs

Cameras (16Wh)
approx 12 times

Battery

AP300/230Wh/72000mAh/3.2V LFP

AP400/345Wh/108000mAh/3.2V LFP

AP500/481Wh/130000mAh/3.7V NCM

AP600/592Wh/160000mAh/3.7V NCM

Output function

2*AC output: 100V~120V/500W;220V~240V/600W 1*DC

output: 12V/10A,120W Max

1*Cigarette Lighter output: 12V/10A,120W Max

3*USB-A(QC3.0) output: 5~12V,18W Max

1*USB-C(PD) output: 5~12V,22.5W Max

1*Wireless charging output: 10W Max

1*LED output: 5W

Input function

AC charging: AC110V(99V~121V),220V(198V~235.4V),150W

Solar panel charging: DC12~24V,150W Car
charging: DC12~15V,120W

Specification

Charging temperature: 0~45°C

Discharge temperature: -10~60°C

Cycles life: > 3000 (LFP) Cycles

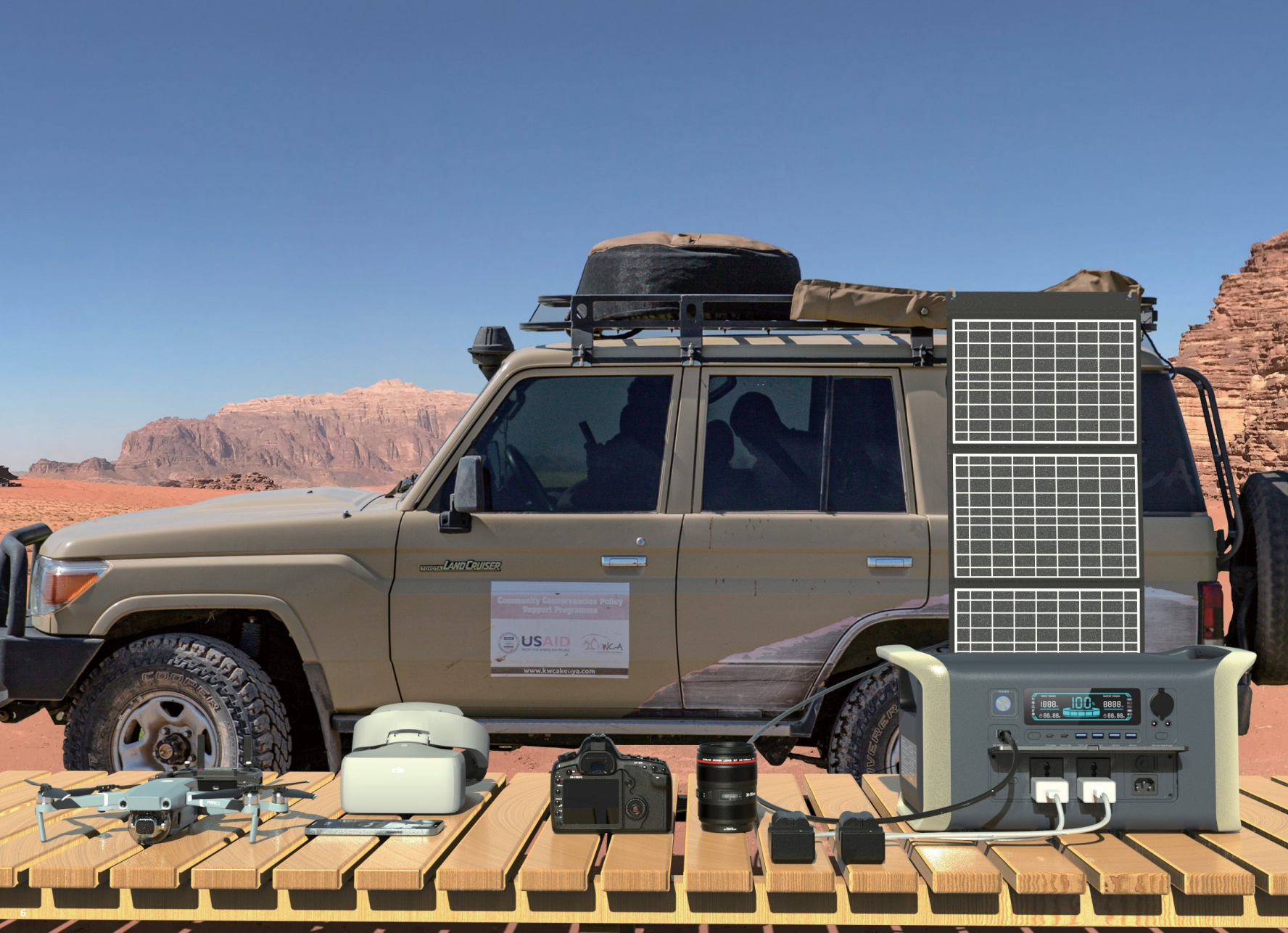
life: > 1000 (NCM)

N.W: AP300/4.2kg AP400/5kg AP500/4.8kg AP600/4.8kg

Sizes: 250*177*177mm

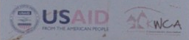
Product features

- ① Various colors available: gray/black/blue/red.
 - ② UPS function for uninterrupted power supply.
 - ③ Smart frequency switching & sleep function.
 - ④ 1-2 Hours super fast charge technology.
 - ⑤ Wireless charging function.
- ☑ High power, Max 600w output power.

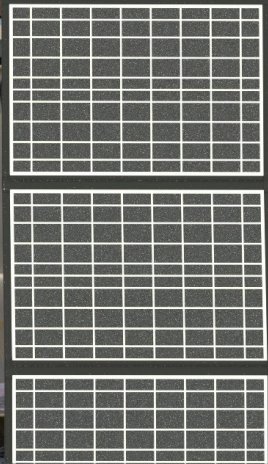


TOYOTA LAND CRUISER

Community Conservancies Policy Support Programme



www.kwcakeiwa.com



1888 100 8888

AP1000

1800W



Common equipment



Kettle (1800W)
approx 6times



Cooker (600W)
approx 1.4Hs



Ventilator (40W)
approx 20Hs



Drone (40Wh)
approx 20times



Projectors (100W)
approx 8Hs



Car Refrigerator(50W)
approx 16Hs



Phone(4000mAh)
approx 57times



Cameras (16Wh)
approx 51times

Battery

Capacity: 1024Wh

Lifepo4 (32000mAh/3.2V)

1800W Rated output,2800W peak value,pure sine wave

Output function

2*AC output: 100V~120V/1600W;220V~240V/1800W

2*DC5525 output: 12V/18A, total 200W Max 1*Cigarette

lighter output: 12V/18A, total 200W Max 4*USB-A(QC3.0)

output: 5~12V,18W Max

1*USB-C(PD) output: 5~20V,100W Max

1*USB-C(PD) output: 5~12V,22.5W Max

1*LED output: 5W

Input function

AC charging: AC110V(99V~121V),220V(198V~235.4V)1000W

Solar panel charging: DC12~48V,500W Car
charging: DC12~15V,120W

Specification

Charging temperature: 0~45°C

Discharge temperature: -10~60°C

Cycle life: > 3000

N.W: 13.5kg

Sizes: 447*234*219mm

Product Features

- 1.2 Hours super fast charging technology.
 - AC+DC can be charged simultaneously, 1500W max.
 - High power DC output, 200W max.
 - UPS function for uninterrupted power supply.
 - Smart frequency switching & Sleep function.
- Safe and stable lifepo4 battery.



AP

2600



Comm



Kettle (1500W)
approx 13times



Cooker (1000W)
approx 1.6Hs



Electric fondue (2300W)
approx 0.7Hs



Outdoor air conditioner (145W)
approx 11Hs



Circular saw (1400W)
approx 1.1Hs



Drill (1500W)
approx 1Hs



Cutting machine(1100W)
approx 1.5Hs



Electric pick (1300W)
approx 1.2Hs

Battery

Capacity: 2048Wh Lifepo4

(640000mAh/3.2V)

2600W Rated output,3600W Peak value,Pure sine wave

Output function

4*AC output: 100V~120V/2400W;220V~240V/2600W

2*DC5525 output: 12V/18A, total 200W Max 1*Cigarette

lighter output: 12V/18A, total 200W Max 4*USB-A(QC3.0)

output: 5~12V,18W Max

1*USB-C(PD) output: 5~20V,100W Max

1*USB-C(PD) output: 5~12V,22.5W Max

1*LED output: 5W

Input function

AC charging: AC110V(99V~121V),220V(198V~235.4V)1000W

Solar panel charging: DC12~48V,500W Car

charging: DC12~15V,120W

Specification

Charging temperature: 0~45°C

Discharge temperature: -10~60°C

Cycle life: > 3000

N.W: 24kg

Sizes: 483*301*301mm

Product features

- ① 2.5 hours super fast charging technology.
 - ② AC+DC can be charged simultaneously, 1500W max.
 - ③ High power DC output, 200W max.
 - ④ UPS function for uninterrupted power supply.
 - ⑤ Smart frequency switching & Sleep function.
- ☑ Safe and stable lifepo4 battery.





Battery

Capacity: 230Wh Lifepo4

(72000mAh/3.2V)

600W Rated output,pure sine wave

Output function

1*AC output: 100V~120V/500W;220V~240V/600W

1*Cigarette lighter output: 12V/10A,120W Max 2*USB-

A(QC3.0) output: 5~12V,18W Max

2*USB-C(PD) output: 5~12V,22.5W Max

1*LED output: 5W

Input function

AC charging: AC110V(99V~121V),220V(198V~235.4V),150W

Solar panel charging: DC12~24V,150W Car charging: DC12~15V,120W

Specification

Charging temperature: 0~45°C

Discharge temperature: -10~60°C

Cycles life: > 3000

N.W: 5.2kg Sizes:

260*179*204mm

Product features

- ① 1-3hours Super fast charging technology.
 - ② UPS function for uninterrupted power supply.
 - ③ Smart frequency switching & sleep function.
 - ④ AC+DC can be charged simultaneously,300W max.
 - ⑤ High power, Max 600w output power.
- ☑ Safe and stable lifepo4 battery.



Common equipment



MacBook Pro (64Wh)
approx 3times



iPad Pro (29Wh)
approx 8times



Phone (4000mAh)
approx 16times



Drone (40Wh)
approx 5times



Fan (50W)
approx 3Hs



Car Fridge (50W)
approx 3Hs



Camping light(10W)
approx 19Hs



Cameras (16Wh)
approx 12times



XP1000

Power Station

1800W

1024Wh




Common equipment




Electric kettle (1800W)
approx 6times


Electric cooker (600W)
approx 1.4Hs



Ventilator (40W)
approx 20Hs


Drone (40Wh)
approx 20 times


Projectors (100W)
approx 8Hs


Car Fridge (65W)
approx 16Hs


Phone (4000mAh)
approx 57 times


Cameras (16Wh)
approx 51 times

Battery

Capacity: 1024Wh

Lifepo4 (32000mAh/3.2V)

1800W Rated output, 2800W peak value, pure sine wave

Output function

2*AC outputs: 100V~120V/1600W; 220V~240V/1800W 1*

Cigarette lighter output: 12V/18A, 200W Max

1* Cigarette lighter output: 24V/10A, 200W Max

4*USB-A (QC3.0) output: 5~12V, 18W Max

1*USB-C(PD) output: 5~12V, 22.5W Max

1*USB-C(PD) output: 5~20V, 100W Max

1*LED output: 5W

Input function

AC charging: AC110V(99V~121V), 220V(198V~235.4V), 1000W

Solar Panel Charging: DC12~48V, 500W Car

Charging: DC12~15V, 120W

Specification

Charging temperature: 0 ~ 45°C

Discharge temperature: -10 ~ 60°C

Cycle life: > 3000

N.W: 14kg

Sizes: 398*228*256mm

Product features

- 1.2Hours super fast charging technology.
 - AC+DC can be charged simultaneously, 1500W max.
 - High power DC output, 200W max.
 - UPS function for uninterrupted power supply.
 - Smart frequency switching & sleep function.
- Safe and stable lifepo4 battery.

ic pressure,
The Earth's atmosphere (or air)
is a layer of gases surrounding
the planet Earth that is retained
by the Earth's gravity. It has a mass
of about five quadrillion metric tons.
Dry air contains roughly
(by volume) 78.08% nitrogen,
20.95% oxygen, 0.93% argon,
0.038% carbon dioxide, and trace
amounts of other gases.



XP

2600



Common



Kettle (1500W)
approx 13times



Cooker (1000W)
approx 1.6Hs



Electric fondue (2300W)
approx 0.7Hs



Outdoor air conditioner (145W)
approx 11Hs



Circular saw (1400W)
approx 1.1Hs



Drill (1500W)
approx 1Hs



Cutting machine (1100W)
approx 1.5Hs



Electric pick (1300W)
approx 1.2Hs

Battery

Capacity: 2048Wh

Lifepo4 (64000mAh/3.2V)

2600W Rated output,3600W peak value,pure sine wave

Output function

4*AC outputs: 100V~120V/2400W;220V~240V/2600W 1*

Cigarette lighter output: 12V/18A,200W Max

1* Cigarette lighter output: 24V/10A,200W Max

4*USB-A (QC3.0) output: 5~12V,18W Max

1*USB-C(PD) output: 5~12V,22.5W Max

1*USB-C(PD) output: 5~20V,100W Max

1*LED output: 5W

Input function

AC charging: AC110V(99V~121V),220V(198V~235.4V),1000W

Solar panel charging: DC12~48V,500W Car charging: DC12~15V,120W

Specification

Charging temperature: 0~45°C

Discharge temperature: -10~60°C

Cycles life: > 3000

N.W: 23kg

Sizes: 458*275*315mm

Product features

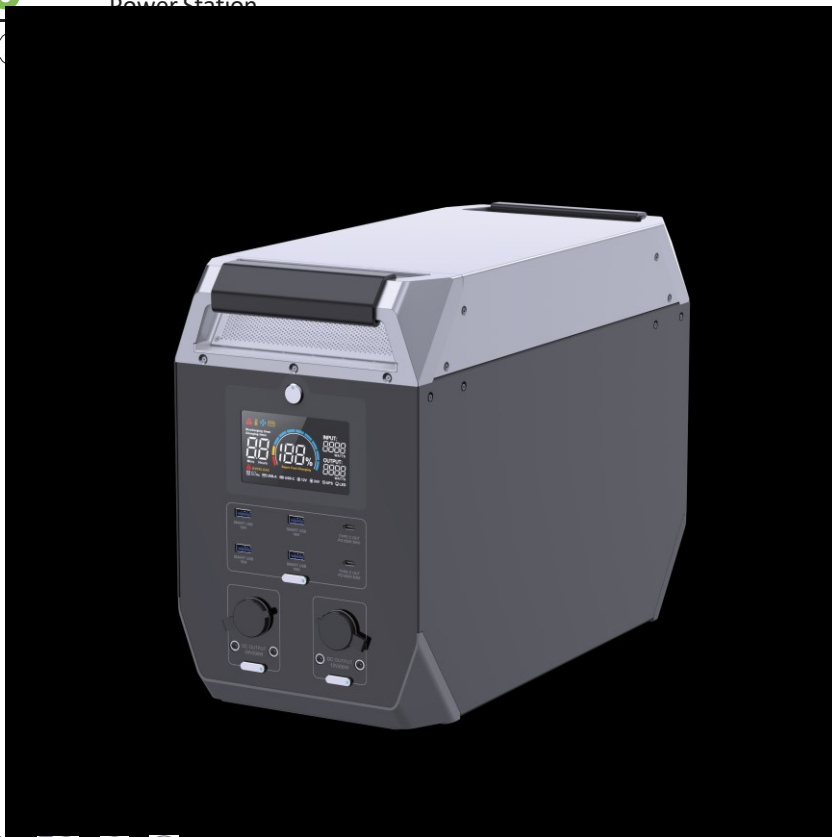
- ① 2.5Hours super fast charging technology.
 - ② AC+DC can be charged simultaneously, 1500W max.
 - ③ High power DC output, 200W max.
 - ④ UPS function for uninterrupted power supply.
 - ⑤ Smart frequency switching & sleep function.
- ☑ Safe and stable lifepo4 battery.



Y2000

Power Station

2000W



Common Equipment



Kettle (1500W)
approx 13times



Cooker (1000W)
approx 1.6Hs



Frying pan (1200W)
approx 1.3Hs



Outdoor air conditioner (145W)
approx 11Hs



Circular saw (1400W)
approx 1.1Hs



Drill (1500W)
approx 1Hs



Cutting machine (1100W)
approx 1.5Hs



Electric pick (1300W)
approx 1.2Hs

Battery

Capacity: 2048Wh

Lifepo4 (64000mAh/3.2V)

2000W Rated output,3000W peak value,pure sine wave

Output function

3*AC output: 100V~120V/2000W;220V~240V/2000W

2*DC5521 output: 12V/16A,200W Max

2*DC5521 output: 24V/8A,200W Max

1* Cigarette lighter output: 12V/16A,200W Max 1*

Cigarette lighter output: 24V/8A,200W Max 4*USB-A

(QC3.0) output: :5~12V,18W Max

2*USB-C(PD) output: 5~20V,100W Max

1*LED outputs: 5W

Input function

AC charging: AC110V(99V~121V),220V(198V~235.4V),1000W

Solar panel charging: DC12~72V,800W Car

charging: DC12~24V,120W **Specification**

Charging temperature: 0~45°C

Discharge temperature: -10~60°C

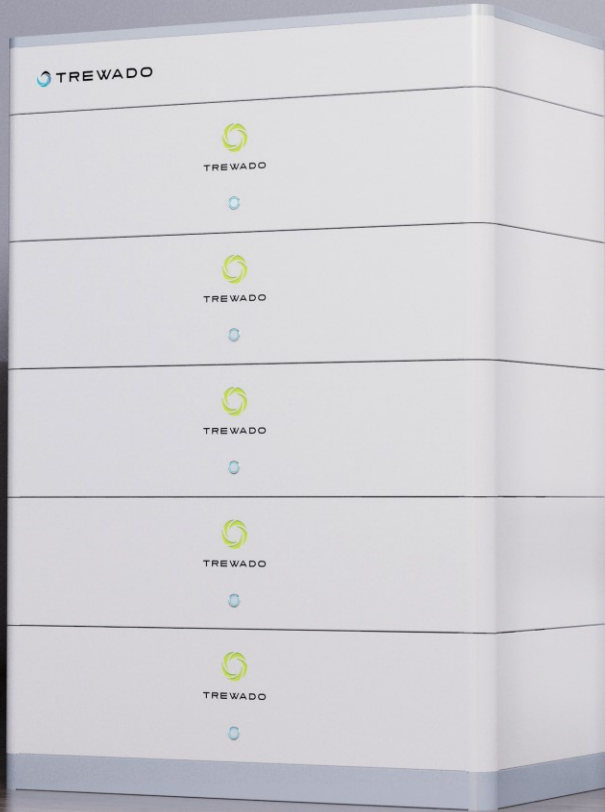
Cycles life: > 3000

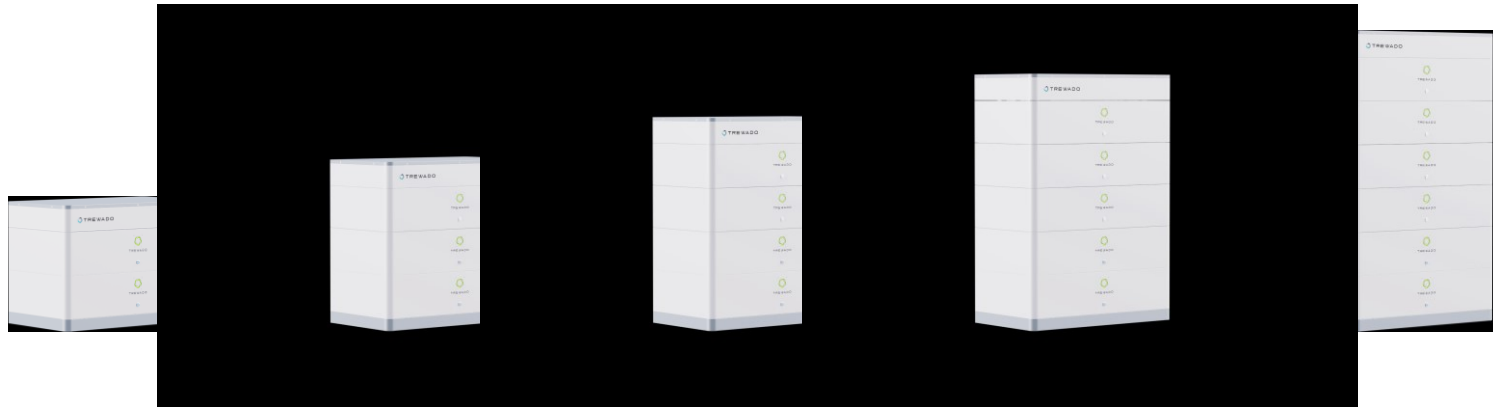
N.W: 24kg

Sizes: 440*325*202mm

Product features

- ① 2.5Hours super fast charging technology.
 - ② High power DC output, 200W max.
 - ③ Safe and stable lifepo4 battery.
 - ④ UPS function for uninterrupted power supply.
 - ⑤ Smart frequency switching & sleep function.
- ☑ Used in parallel, maximum output 4000W





Specification

Model	TLD10	TLD15	TLD20	TLD25	TLD30
Battery type	LFP	LFP	LFP	LFP	LFP
Rated energy	10.24KWh	15.36KWh	20.48KWh	25.6KWh	30.72KWh
Rated voltage	51.2V	51.2V	51.2V	51.2V	51.2V
Charge/discharge cut off voltage	46.4V~55.2V	46.4V~55.2V	46.4V~55.2V	46.4V~55.2V	46.4V~55.2V
Rated charge/discharge current	100A	100A	150A	150A	200A
Max. charge/discharge current	100A	100A	150A	150A	200A
Max. discharge power	5.12KW	5.12KW	7.68KW	7.68KW	10.24KW
Communication interface	CAN2.0/RS485	CAN2.0/RS485	CAN2.0/RS485	CAN2.0/RS485	CAN2.0/RS485
Operating temperature	-15°C~50°C	-15°C~50°C	-15°C~50°C	-15°C~50°C	-15°C~50°C
Protection class	IP55	IP55	IP55	IP55	IP55
Altitude	< 2000m	< 2000m	< 2000m	< 2000m	< 2000m
Cycle life	≥6000	≥6000	≥6000	≥6000	≥6000
Cooling method	Dissipates heat naturally	Dissipates heat naturally	Dissipates heat naturally	Dissipates heat naturally	Dissipates heat naturally



AP145L-3

Home

3300W - 2976Wh



AP145L-3

Battery pack parameters

Battery type	LFP
Rated voltage	48Vdc
Battery voltage range	40V~60Vdc
Capacity	62Ah
Battery energy	3.0KWh
Cycle life	> 3000
Number of battery modules	1

PV & AC Parameters

Maximum open circuit voltage	145Vdc
MPTT voltage range	60V~115Vdc
MPTT capture efficiency	≥99%
MPTT transfer efficiency	≤95%
PV maximum charging current	≤30ADC

Maximum mains charging current	≤20Aac
Short circuit protection	Interrupter
Overcharge protection	Alarms and shuts off charging after 1 minute
Hybrid (PV+AC) charging current	0~120A (configurable)

Inverter

Rated output power	220~240V(3300W) 100~120V(3000W)
Rated battery input voltage	48Vdc
Output waveforms	Pure sine wave
Rated output voltage	120VAC & 230VAC
Rated output frequency	50Hz/60Hz

Parameters

Protection class	IP54
Dimension (L*W*H)	458*380*561mm
N.W (kg)	55



AP145D Home Energy Storage

3300W - 5952W



AP145D

Battery pack parameters	AP145D-6	AP145D-9	Maximum AC charging current	≤20Aac	≤20Aac
Battery type	LFP	LFP	Short circuit protection	Interrupter	Interrupter
Rated voltage	48Vdc	48Vdc	Overcharge protection	Alarms and shuts off charging after 1 minute 0~120A (configurable)	
Battery voltage range	40V~60Vdc	40V~60Vdc	Hybrid (PV+AC) charging current	configurable)	0~120A (configurable)
Capacity	134Ah	186Ah	Inverter		
Battery energy	6.0KWh	9.0KWh	Rated output power	100~120V(3000W)	220~240V(3300W)
Cycle life	> 3000	> 3000	Rated battery input voltage	48Vdc	48Vdc
Number of battery modules	2	3	Output waveforms	Pure sine wave	Pure sine wave
PV & AC Parameters			Rated output voltage	120VAC & 230VAC	120VAC & 230VAC
Maximum open circuit voltage	145Vdc	145Vdc	Rated output frequency	50Hz/60Hz	50Hz/60Hz
MPTT voltage range	60V~115Vdc	60V~115Vdc	Parameters		
MPTT capture efficiency	≥99%	≥99%	Protection class	IP54	IP54
MPTT transfer efficiency	≤95%	≤95%	Dimension (L*W*H))	458*380*801mm	458*380*1041mm
PV Maximum charging current	≤30ADC	≤30ADC	N.W (kg)	89	123

03

Commercial & Industrial Energy





Specification

Model	500KW/1000KWh(20GP)	630KW/2400KWh(40GP)	1000KW/2000KWh(40GP)
Battery type	LFP	LFP	LFP
Capacity	280Ah	280Ah	280Ah
DC voltage range	627.2V~806.4Vdc	627.2V~806.4Vdc	627.2V~806.4Vdc
System capacity	1003KWh	2408KWh	2006KWh
AC side			
Rated power	500KW	630KW	1000KW
Rated voltage	AC380V	AC380V	AC380V
Rated frequency	50Hz/60Hz	50Hz/60Hz	50Hz/60Hz
Maximum discharge Power	500KW	630KW	1000KW
System parameter			
Cooling	Air Conditioner	Air Conditioner	Air Conditioner
Cycle life	≥6000	≥6000	≥6000
Size (L*W*H)	6058*2896*2640mm	12192*2896*2640mm	12192*2896*2640mm
System weight	17t	35t	30t

LFP Lead Acid Replacement

04





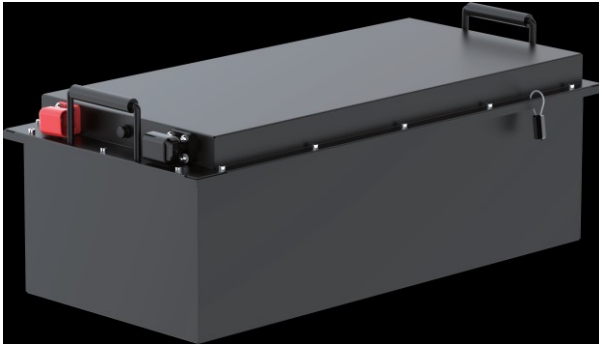
Specification

Model	12.8V12Ah	12.8V200Ah	24V100Ah	48V100Ah
Battery type	LFP	LFP	LFP	LFP
Capacity	12Ah	200Ah	100Ah	100Ah
Standard voltage	12.8V	12.8V	24V	48V
Voltage range	10V~14.6V	10V~14.6V	20V~29.2V	40V~58.4V
Applicable power	120W	2500W	5000W	5000W
Charging current	5A	10A	10A	10A
Discharge current	12A	200A	100A	100A
Operating current	5-200A	5-200A	5-200A	5-200A
Peak current	200A	200A	200A	200A
Operating temperature	-20°C~55°C	-20°C~55°C	-20°C~55°C	-20°C~55°C
Protection class	IP67	IP67	IP67	IP67
Dimension (L*W*H)	151*99*94mm	521*238*218mm	521*238*208mm	521*238*208mm

05

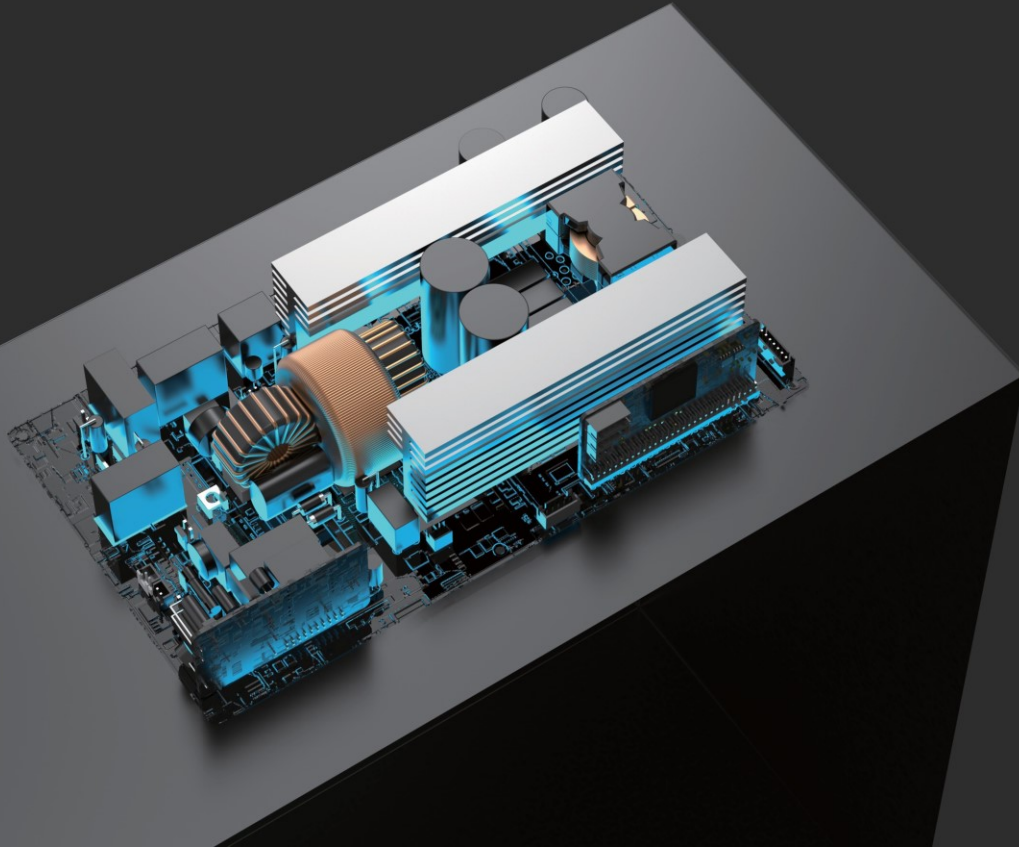
Electric Motorcycle Tricycle Battery





Specification

Model	60160	72160	60200	72200
Battery type	NCM	NCM	NCM	NCM
Capacity	160Ah	160Ah	200Ah	200Ah
Standard voltage	60V	72V	60V	72V
Voltage range	51V~71.4V	60V~84V	51V~71.4V	60V~84V
Total capacity	9.2KWh	10.8KWh	10.8KWh	12.8KWh
Applicable motor power	≤5000W	≤5000W	≤6000W	≤6000W
Continuous discharge current	≤150A	≤150A	≤200A	≤200A
Charging operating temperature	-15°C~55°C	-15°C~55°C	-15°C~55°C	-15°C~55°C
Discharge operating temperature	-30°C~60°C	-30°C~60°C	-30°C~60°C	-30°C~60°C
Shell material	SPCC	SPCC	SPCC	SPCC
Protection class	IP56	IP56	IP56	IP56
Charging power	71.4V20A	84V20A	71.4V20A	84V20A
Dimension (L*W*H)	530*300*225mm	575*300*225mm	571*348*250mm	571*348*250mm
N.W (kg)	46	53	50	57





1000W



1600W



2000W



2500W



3000W



4000W

Specification

Output power	1000W	1600W	2000W	2500W	3000W	4000W
Peak value	2000W	3200W	4000W	5000W	6000W	8000W
DC input voltage	12V/24V	12V/24V	12V/24V	12V/24V	12/24/48/60/72V	12/24/48/60/72V
AC output voltage	110/220/230/240V	110/220/230/240V	110/220/230/240V	110/220V	110/220V	110/220V
Conversion efficiency	> 90%	> 90%	> 90%	> 90%	> 90%	> 90%
Material	Aluminum alloy	Aluminum alloy	Aluminum alloy	Aluminum alloy	Aluminum	Aluminum alloy
Output waveforms	Pure sine wave	Pure sine wave	Pure sine wave	Pure sine wave	Pure sine wave	Pure sine wave
Dimension(L*W*H)	300*112*65mm	310*160*100mm	360*160*100mm	305*180*140mm	340*180*140mm	390*180*140mm
N.W(Kg)	1.2	2.36	2.8	3	4.2	4.9





Specification

Model	3KW	6KW	AC side input		
PV side input			Rated voltage	230VAC	230VAC
PV input voltage range	150-450VDC	150-450VDC	Rated input frequency	50Hz/60Hz (adaptive)	50Hz/60Hz (adaptive)
Maximum PV input power	3000W	6000W	Frequency range	40Hz~65Hz	40Hz~65Hz
PV Maximum charging current	100A	100A	Maximum AC charging current	60A	60A
Battery			Inverter parameters		
Battery type	Lead-acid/LFP	Lead-acid/LFP	Rated output capacity	3KW	6.6KW
Rated input voltage	48VDC	48VDC	Rated output voltage	230VAC/208VAC/240VAC	230VAC/208VAC/240VAC
Maximum charging current	100A	130A	Rated output frequency	50Hz/60Hz	50Hz/60Hz
DC voltage range	46.4-58.8V (LFP) 38.4-60V (Lead-acid)	46.4-58.8V (LFP) 38.4-60V (Lead-acid)	Maximum efficiency	95.5%	95.5%
Equipment protection			Basic parameters		
Battery overvoltage protection	yes	yes	Storage temperature	-15°C~60°C	-15°C~65°C
Overload protection	yes	yes	Temperature range	0~90°C%	0~90°C%
Output short circuit protection	yes	yes	Dimension (H*W*D)	378*250*105mm	350*300*100mm
Overtemperature protection	yes	yes	N.W.(kg)	9	9.7

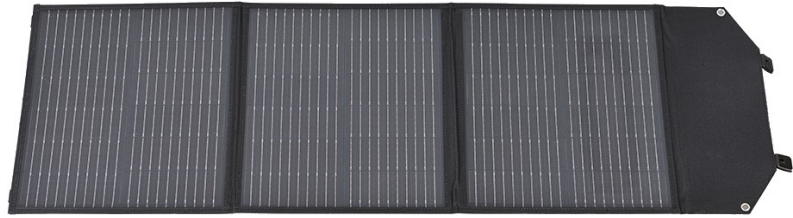
07

Solar panel



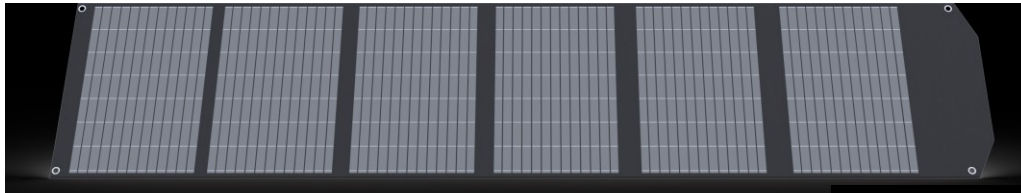
Specification

Output power	100W
Folding number	3
Conversion efficiency	22%
Output voltage	18V
Output current	5.5A
Unfolded size	455*1412*35mm
Folded size	455*430*50mm
N.W (kg)	4



Specification

Output power	200W
Folding number	6
Conversion efficiency	22%
Output voltage	18V
Output current	11A
Unfolded size	455*2702*40mm



Specification

Output power	200W
Folding mode	Flexible Folding
Conversion efficiency	23%
Output voltage	18V
Output current	11A
Unfolded size	1180*916*3mm
N.W (kg)	3.6



Product Review



UA W 10 00



UA W5 00



UA110 1L



U AF5 50



UA F1 100



More new arrivals coming soon.....

PowerStationWholesale.com

Shenzhen R&D Center: 4/F, B5B, Yingzhan Industrial Park, Longtian Street, Pingshan District, Shenzhen, China.

Zhejiang Factory: No.1888, South Taihu Lake Avenue, Bailidian Town, Wuxing District, Huzhou City, Zhejiang Province, China.

Zhejiang Headquarter: 17th Floor, Xiangyi Building, No. 676 Danfeng Road, Binjiang District, Hangzhou, Zhejiang, China.