

# **FCC TEST REPORT**

for

**Product: Portable power station**

**Model: Apower1000, Apower2000, Apower1000Pro, Apower2000Pro,BS041**

**Report No.: KEYS23080915001FC-02**

Issued for

**Zhejiang Zhenneng Technology Co.,Ltd**

**Floor 1, No. 1818-1, South Taihu Avenue, Balidian Town, WuxingDistrict,  
Huzhou City, Zhejiang Province**

Issued by

**Guangdong KEYS Testing Technology Co., Ltd.**

**6/F, Building B, Chuangyizhigu Industrial Park,No.5, Hehe Street, Songxi  
Road, Hengkeng, Liaobu, Dongguan, Guangdong, China**

Note: This report shall not be reproduced except in full, without the written approval of Guangdong KEYS Testing Technology Co., Ltd. This document may be altered or revised by Guangdong KEYS Testing Technology Co., Ltd. personnel only, and shall be noted in the revision section of the document. The test results presented in this report only relate to the tested sample.

## TABLE OF CONTENTS

<b>1. TEST CERTIFICATION .....</b>	<b>3</b>
<b>2. TEST SUMMARY .....</b>	<b>5</b>
<b>3. TEST SITE .....</b>	<b>6</b>
3.1. TEST FACILITY .....	6
3.2. MEASUREMENT UNCERTAINTY .....	6
3.3. LIST OF TEST AND MEASUREMENT INSTRUMENTS .....	6
<b>4. EUT DESCRIPTION .....</b>	<b>8</b>
<b>5. TEST METHODOLOGY .....</b>	<b>9</b>
5.1. TEST MODE .....	9
5.2. EUT SYSTEM OPERATION .....	9
<b>6. SETUP OF EQUIPMENT UNDER TEST .....</b>	<b>10</b>
6.1. DESCRIPTION OF SUPPORT UNITS .....	10
6.2. CONFIGURATION OF SYSTEM UNDER TEST .....	10
<b>7. CONDUCTED EMISSION MEASUREMENT .....</b>	<b>11</b>
7.1. LIMITS .....	11
7.2. TEST PROCEDURES .....	11
7.3. TEST SETUP .....	12
7.4. TEST RESULT .....	12
<b>8. RADIATED EMISSION MEASUREMENT .....</b>	<b>15</b>
8.1. LIMITS .....	15
8.2. TEST PROCEDURE .....	15
8.3. TEST SETUP .....	16
8.4. TEST RESULT .....	16
<b>9. PHOTOGRAPHS OF THE TEST CONFIGURATION .....</b>	<b>19</b>
<b>10. PHOTOGRAPHS OF EUT .....</b>	<b>20</b>
<b>11. LABELING REQUIREMENTS .....</b>	<b>22</b>
<b>12. INFORMATION TO USER .....</b>	<b>23</b>

## 1. TEST CERTIFICATION

Product:	Portable power station
Trade mark:	NA
Model:	Apower1000, Apower2000, Apower1000Pro, Apower2000Pro,BS041
Applicant :	Zhejiang Zhenneng Technology Co.,Ltd
Address:	Floor 1, No. 1818-1, South Taihu Avenue, Balidian Town, WuxingDistrict, Huzhou City, Zhejiang Province
Manufacturer:	Zhejiang Zhenneng Technology Co.,Ltd
Address:	Floor 1, No. 1818-1, South Taihu Avenue, Balidian Town, WuxingDistrict, Huzhou City, Zhejiang Province
Test Date:	August 9, 2023 to August 18, 2023
Issued Date:	August 18, 2023
Test Voltage:	DC Input: DC12-48V; AC Input: AC110-230V, 50/60Hz Capacity :32V,320000mAh, 1024Wh; AC Output: 110V/230V, 50Hz/60 Hz; DC Output*2: DC13V,18A; Car charger outlet : DC 12~24V,18A; USB-C 1 Output: 5-12V/2.4A,22.5W Max; USB-C 2 Output: 5-20V/5A,100W Max; USB Output*4: 5V/2.4A, 9V/2A,12V/1.5A;
Applicable Standards:	FCC Part 15, Subpart B Class B ANSI C63.4:2014

The above equipment has been tested by Guangdong KEYS Testing Technology Co., Ltd. and found compliance with the requirements in the technical standards mentioned above. The test results presented in this report only relate to the product/system tested. The Other similar equipment will not necessarily produce the same results due to production tolerance and measurement uncertainties.

Test Engineer:

Technical Manager:

Sunny Li / Engineer



Jason Zhan / Manager

## 2. TEST SUMMARY

EMISSION			
Standard	Item	Result	Remarks
FCC 47 CFR Part 15 Class B	Conducted Emission (Main Port)	PASS	Complied with limit
	Radiated Emission	PASS	Complied with limit

Note: 1) The test result verdict is decided by the limit of test standard.

2) The information of measurement uncertainty is available upon the customer's request.

### 3. TEST SITE

#### 3.1. TEST FACILITY

Guangdong KEYS Testing Technology Co., Ltd.

Address: 6/F, Building B, Chuangyizhigu Industrial Park, No.5, Hehe Street, Songxi Road, Hengkeng, Liaobu, Dongguan, Guangdong, China

#### 3.2. MEASUREMENT UNCERTAINTY

Parameter	Uncertainty
Temperature	$\pm 1^{\circ} \text{C}$
Humidity	$\pm 5\%$
DC and Low Frequency Voltages	$\pm 3\%$
Conducted Emission(150KHz-30MHz)	$\pm 3.60\text{dB}$
Radiated Emission(30MHz-1GHz)	$\pm 4.76\text{dB}$
Radiated Emission (1GHz-18GHz)	$\pm 4.44\text{dB}$

Note 1: This uncertainty represents an expanded uncertainty expressed at approximately the 95% confidence level using a coverage factor of k=2.

#### 3.3. LIST OF TEST AND MEASUREMENT INSTRUMENTS

##### 3.3.1. For conducted emission at the mains terminals test

Name of Equipment	Manufacturer	Model	Serial No.	Calibration Due
EMI Test Receiver	Rohde&Schwarz	ESCI	101417	Sep. 19, 2023
Artificial Mains Network	Rohde&Schwarz	L2-16B	000WX31025	Sep. 19, 2023
Artificial Mains Network	Rohde&Schwarz	ENV216	101342	Sep. 19, 2023

**3.3.2. For radiated emission test (30MHz-1GHz)**

Name of Equipment	Manufacturer	Model	Serial No.	Calibration Due
EMI Test Receiver	Rohde&Schwarz	ESCI	101417	Sep. 19, 2023
Bilog Antenna	SCHWARZBECK	VULB 9168	9168-572	Sep. 21, 2023
Preamplifier (low frequency)	SCHWARZBECK	BBV 9475	9745-0013	Sep. 19, 2023

**3.3.3. For radiated emission test (1GHz above)**

Name of Equipment	Manufacturer	Model	Serial No.	Calibration Due
EMI Test Receiver	Rohde&Schwarz	ESCI	101417	Sep. 19, 2023
Spectrum Analyzer	Agilent	E4407B	MY45109572	Oct. 12, 2023
Horn Antenna	SCHWARZBECK	9120D	9120D-1246	Sep. 26, 2023
LOW NOISE AMPLIFIER	ZHINAN	ZN3380C	15002	Sep. 19, 2023

## 4. EUT DESCRIPTION

<b>Product</b>	Portable power station
<b>Model</b>	Apower1000
<b>Supplied Voltage</b>	DC Input: DC12-48V; AC Input: AC110-230V, 50/60Hz Capacity :32V,320000mAh, 1024Wh; AC Output: 110V/230V, 50Hz/60 Hz; DC Output*2: DC13V,18A; Car charger outlet : DC 12~24V,18A; USB-C 1 Output: 5-12V/2.4A,22.5W Max; USB-C 2 Output: 5-20V/5A,100W Max; USB Output*4: 5V/2.4A, 9V/2A,12V/1.5A;
<b>Power</b>	--

### I/O PORT

I/O PORT TYPES	Q'TY	TESTED WITH
AC Port	1	<input checked="" type="checkbox"/>
DC Port	1	<input type="checkbox"/>

### Models Difference

All series models are identical, except for model name and battery capacity difference for trading purpose.

### Note :

The report is based on previous report with no.: KEYS23052902001FC-02 dated on June 2, 2023 issued by KEYS lab to do below amendment. Except as specified below. Others do not any change and not need to do any testing.

-Change application and manufacturer information from "Shenzhen Uapow Co.,Limited / 4th Floor, Building B5B, Yingzhan Industrial ParK, Longtian Street,Pingshan District, Shenzhen" to "Zhejiang Zhenneng Technology Co.,Ltd / Floor 1, No. 1818-1, South Taihu Avenue, Balidian Town, WuxingDistrict, Huzhou City, Zhejiang Province".

-Add model "BS041".



## 5. TEST METHODOLOGY

### 5.1. TEST MODE

The EUT was tested together with the thereafter additional components, and a configuration, which produced the worst emission levels, was selected and recorded in this report.

The following test mode(s) were assessed.

Test Items		Test Mode
Emission	Conducted Emission	Working
	Radiated Emission	Working

### 5.2. EUT SYSTEM OPERATION

1. Set up EUT with the support equipment.
2. Make sure the EUT work normally during the test.

## 6. SETUP OF EQUIPMENT UNDER TEST

### 6.1. DESCRIPTION OF SUPPORT UNITS

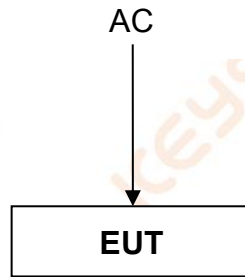
The EUT has been tested as an independent unit together with other necessary accessories or support units. The following support units or accessories were used to form a representative test configuration during the tests.

No.	Equipment	Model	Serial No.	Trade Name
1.	N/A	N/A	N/A	N/A

Note: 1) All the equipment/cables were placed in the worst-case configuration to maximize the emission during the test.

2) Grounding was established in accordance with the manufacturer's requirements and conditions for the intended use.

### 6.2. CONFIGURATION OF SYSTEM UNDER TEST



(EUT: Portable power station)

## 7. CONDUCTED EMISSION MEASUREMENT

### 7.1. LIMITS

FREQUENCY (MHz)	Class A		Class B	
	Quasi-peak dB( $\mu$ V)	Average dB( $\mu$ V)	Quasi-peak dB( $\mu$ V)	Average dB( $\mu$ V)
0.15 - 0.5	79	66	66-56	56-46
0.5 - 5.0	73	60	56	46
5.0 - 30.0	73	60	60	50

Note: 1) The lower limit shall apply at the transition frequencies.

2) The limit decreases in line with the logarithm of the frequency in the range of 0.15 to 0.50 MHz.

3) All emanations from a class A/B digital device or system, including any network of conductors and apparatus connected thereto, shall not exceed the level of field strengths specified above.

### 7.2. TEST PROCEDURES

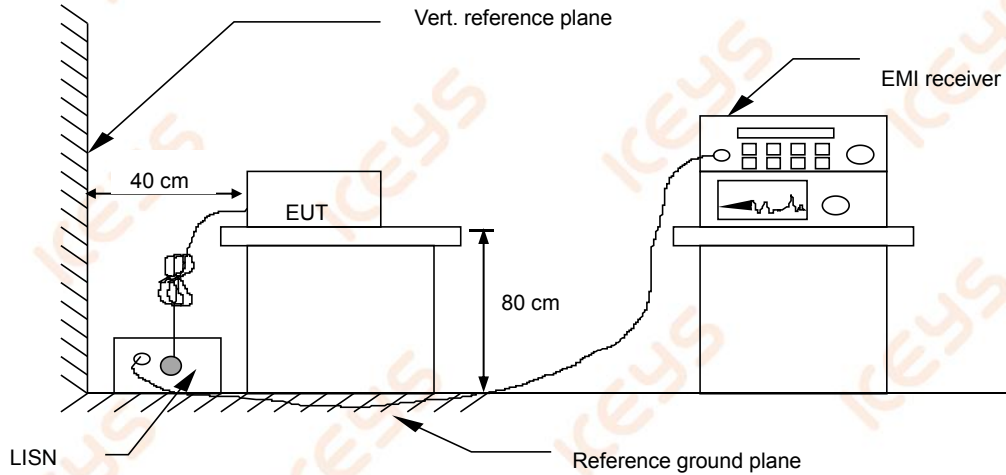
The EUT and Support equipment, if needed, was set up as per the test configuration to simulate typical usage per the user's manual. When the EUT is a tabletop system, a wooden table with a height of 0.8 meters is used and is placed on the ground plane. When the EUT is floor standing equipment, it is placed on the ground plane, which has a 3-12 mm non-conductive covering to insulate the EUT from the ground plane. The EUT should be 0.8 m apart from the AMN, where the mains cable supplied by the manufacturer is longer than 1 m, the excess should be folded at the centre into a bundle no longer than 0.4 m, Details please refer to test setup photography.

The Receiver scanned from 150 kHz to 30 MHz for emissions in each of the test modes. During the above scans, the emissions were maximized by cable manipulation.

A scan was taken on both of the power lines, Line and neutral, recording at least the six highest emissions. Emission frequency and amplitude were recorded into a computer in which correction factors were used to calculate the emission level and compare reading to the applicable limit. The test data of the worst-case condition(s) was recorded.

Note: Test Software Name: e3, Software Version: 1.0.0.0.

### 7.3. TEST SETUP



For the actual test configuration, please refer to the related item – Photographs of the Test Configuration.

### 7.4. TEST RESULT

<b>Product name</b>	Portable power station	<b>Tested By</b>	Brian
<b>Model</b>	Apower1000	<b>Detector Function</b>	Peak / Quasi-peak/AV
<b>Test Mode</b>	Working	<b>6 dB Bandwidth</b>	9 kHz
<b>Environmental Conditions</b>	24.0°C, 55.1 % RH, 101.2 kPa	<b>Test Result</b>	Pass

Note:

L = Line Line, N = Neutral Line

Freq. = Emission frequency in MHz

Reading level (dB $\mu$ V) = Receiver reading

Corr. Factor (dB) = attenuator + Cable loss

Level (dB $\mu$ V) = Reading level (dB $\mu$ V) + Corr. Factor (dB)

Limit (dB $\mu$ V) = Limit stated in standard

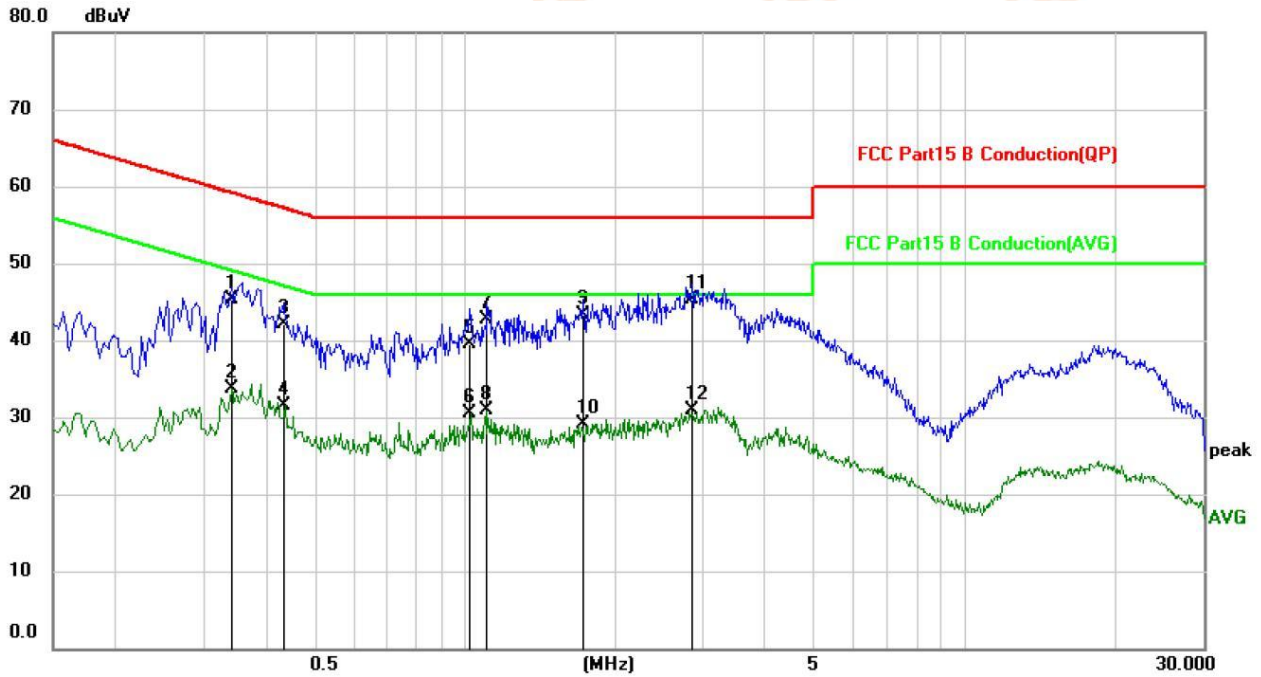
Over Limit (dB) = Level (dB $\mu$ V) – Limit (dB $\mu$ V)

QP = Quasi-Peak

AV = Average

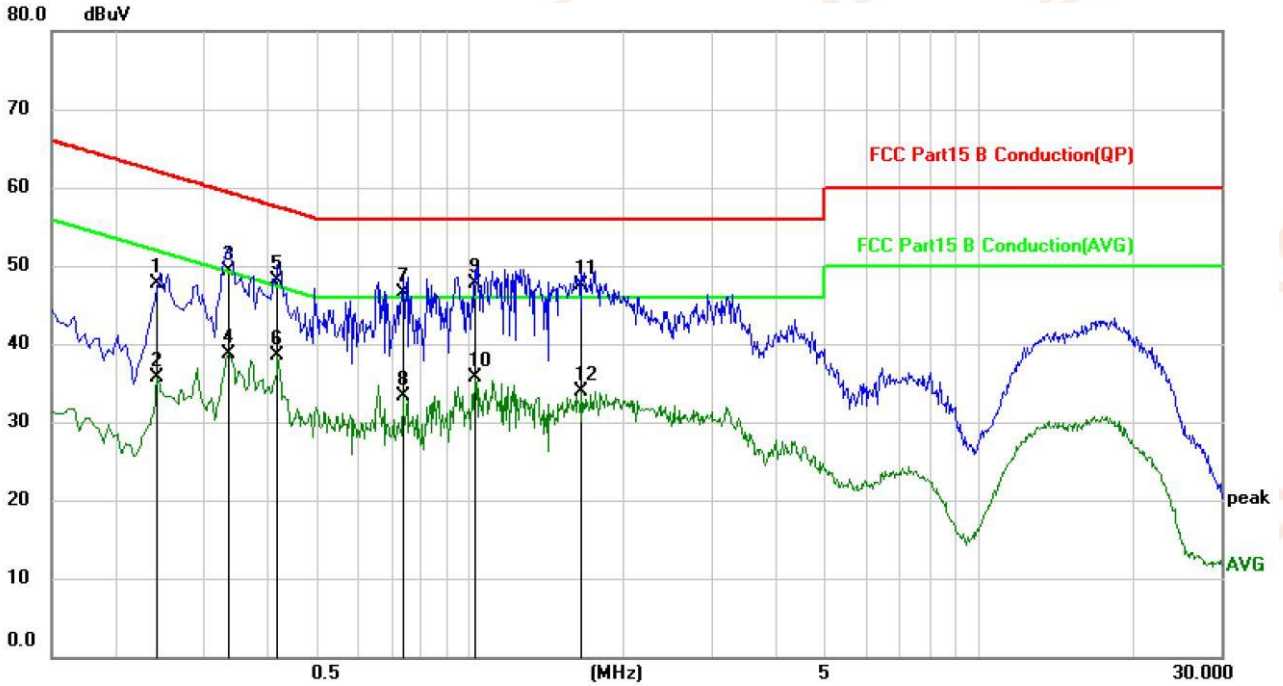
Please refer to the following diagram:

Line:



No.	Mk.	Freq. MHz	Reading Level dBuV	Correct Factor dB	Measure- ment dBuV	Limit dBuV	Over dB	Detector	Comment
1		0.3420	35.00	10.31	45.31	59.15	-13.84	QP	
2		0.3420	23.38	10.31	33.69	49.15	-15.46	AVG	
3		0.4339	31.90	10.27	42.17	57.18	-15.01	QP	
4		0.4339	21.23	10.27	31.50	47.18	-15.68	AVG	
5		1.0260	29.14	10.38	39.52	56.00	-16.48	QP	
6		1.0260	20.03	10.38	30.41	46.00	-15.59	AVG	
7		1.1100	32.30	10.38	42.68	56.00	-13.32	QP	
8		1.1100	20.54	10.38	30.92	46.00	-15.08	AVG	
9		1.7338	32.87	10.38	43.25	56.00	-12.75	QP	
10		1.7338	18.80	10.38	29.18	46.00	-16.82	AVG	
11	*	2.8500	34.86	10.35	45.21	56.00	-10.79	QP	
12		2.8500	20.57	10.35	30.92	46.00	-15.08	AVG	

Neutral:



No.	Mk.	Freq. MHz	Reading Level dBuV	Correct Factor dB	Measure- ment dBuV	Limit dBuV	Over dB	Detector	Comment
1		0.2419	37.30	10.31	47.61	62.03	-14.42	QP	
2		0.2419	25.45	10.31	35.76	52.03	-16.27	AVG	
3		0.3339	39.03	10.29	49.32	59.35	-10.03	QP	
4		0.3339	28.46	10.29	38.75	49.35	-10.60	AVG	
5		0.4179	37.86	10.26	48.12	57.49	-9.37	QP	
6		0.4179	28.15	10.26	38.41	47.49	-9.08	AVG	
7		0.7378	36.17	10.27	46.44	56.00	-9.56	QP	
8		0.7378	23.11	10.27	33.38	46.00	-12.62	AVG	
9	*	1.0260	37.29	10.36	47.65	56.00	-8.35	QP	
10		1.0260	25.42	10.36	35.78	46.00	-10.22	AVG	
11		1.6539	37.18	10.34	47.52	56.00	-8.48	QP	
12		1.6539	23.58	10.34	33.92	46.00	-12.08	AVG	

## 8. RADIATED EMISSION MEASUREMENT

### 8.1. LIMITS

Maximum permissible level of Radiated Emission measured at 3 meter distance.

FREQUENCY (MHz)	dB $\mu$ V/m (At 3m)	
	Class A digital device	Class B digital device
30~88	49.00	40.00
88~216	53.50	43.50
216~960	56.40	46.00
960~1000	59.50	54.00

Note: 1) The lower limit shall apply at the transition frequencies.

2) Emission level (dB $\mu$ V/m) = 20 log Emission level ( $\mu$ V/m).

### 8.2. TEST PROCEDURE

The equipment was set up as per the test configuration to simulate typical usage per the user's manual. When the EUT is a tabletop system, a wooden turntable with a height of 0.8 meters is used which is placed on the ground plane. When the EUT is floor standing equipment, it is placed on the ground plane which has a 0.1 m non-conductive covering to insulate the EUT from the ground plane.

The antenna was placed at 3 meter away from the EUT. The antenna connected to the spectrum analyzer via a cable and at times a pre-amplifier would be used.

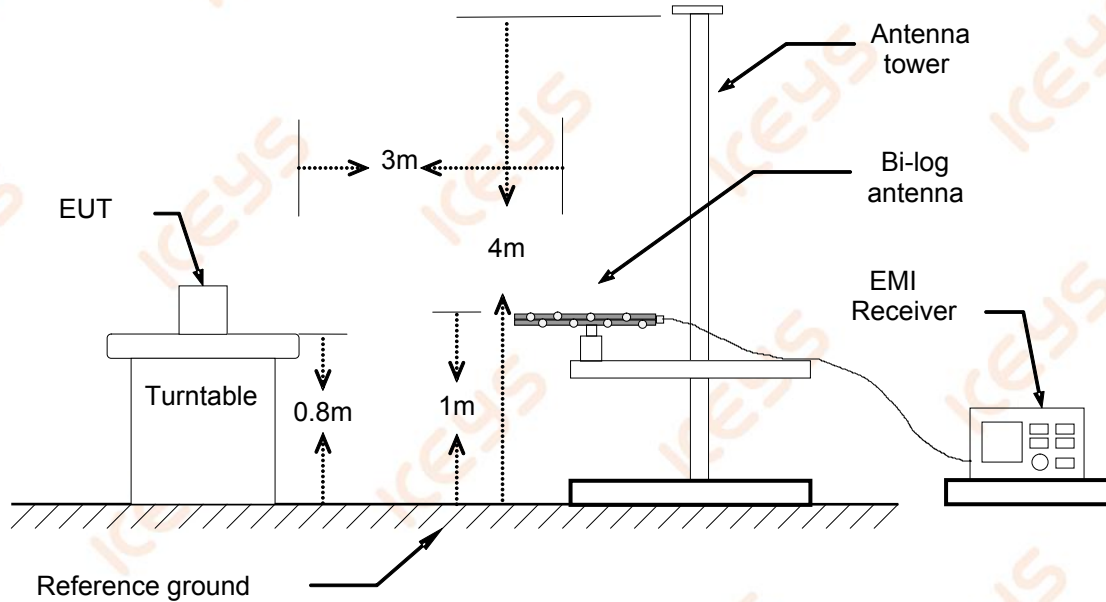
The analyzer / receiver quickly scanned from 30 MHz to 1000 MHz. The EUT test program was started. Emissions were scanned and measured rotating the EUT to 360 degrees and positioning the antenna 1 to 4 meters above the ground plane, in both the vertical and the horizontal polarization, to maximize the emission reading level.

During the above scans, the emissions were maximized by cable manipulation. Each modes is measured, recorded at least the six highest emissions. The emission frequency, amplitude, antenna position, polarization and turntable position were recorded into a computer in which correction factors were used to calculate the emission level and compare reading to the applicable limit and only Q.P. reading is presented.

The test data of the worst-case condition(s) was recorded.

Note: Test Software Name: e3, Software Version: 8.2.1.0.

### 8.3. TEST SETUP



For the actual test configuration, please refer to the related item – Photographs of the Test Configuration

### 8.4. TEST RESULT

<b>Product name</b>	Portable power station	<b>Antenna Distance</b>	3 m
<b>Model</b>	Apower1000	<b>Antenna Pole</b>	Vertical / Horizontal
<b>Test Mode</b>	Working	<b>Detector Function</b>	Peak / Quasi-peak
<b>Environmental Conditions</b>	24.0°C, 55.1 % RH, 101.2 kPa	<b>6 dB Bandwidth</b>	120 kHz
<b>Tested by</b>	Brian	<b>Test Result</b>	Pass

Note:

Freq. = Emission frequency in MHz

Reading level (dB $\mu$ V) = Receiver reading(dB $\mu$ V)

Corr.Factor (dB/m)=Antenna factor(dB/m)+Cable loss(dB)-Preamp Factor(dB)

Measurement (dB $\mu$ V/m)=Reading level(dB $\mu$ V)+ Corr. Factor (dB/m)

Limit (dB $\mu$ V/m) = Limit stated in standard

Over Limit (dB) = Measurement (dB $\mu$ V/m) – Limit (dB $\mu$ V/m)

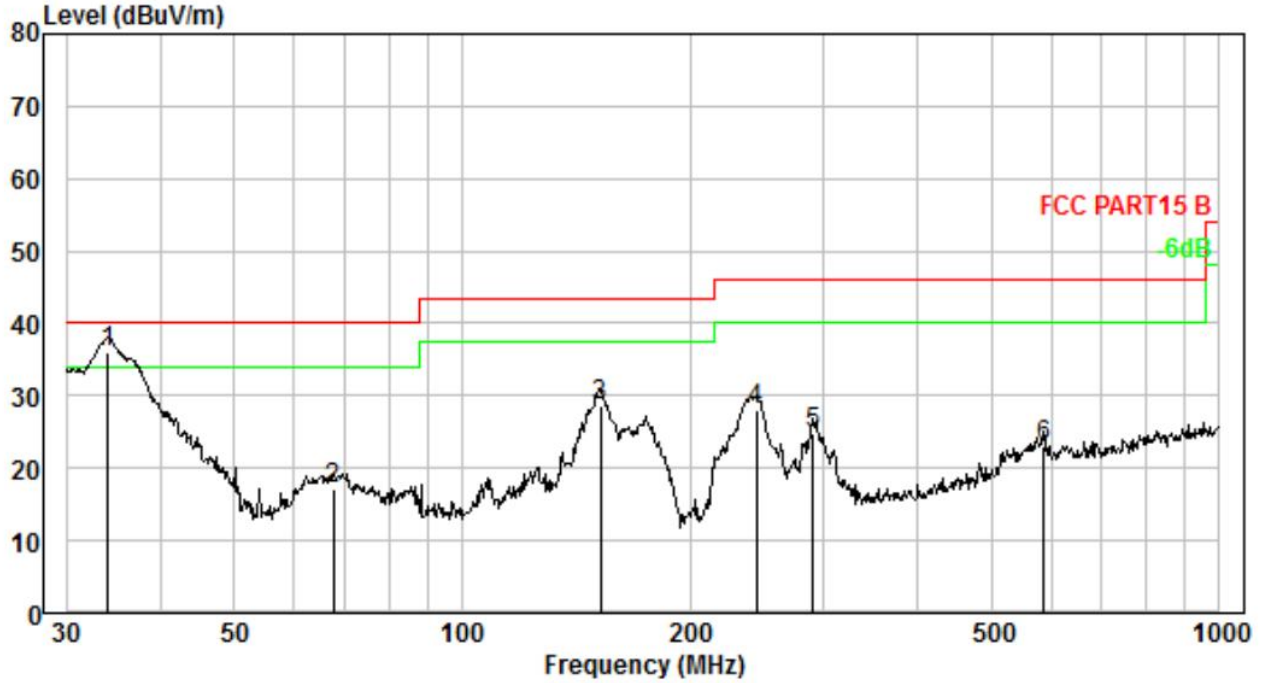
QP = Quasi-Peak

The highest frequency of the internal sources of the EUT was less than 108 MHz, so the measurement was only made up to 1 GHz.



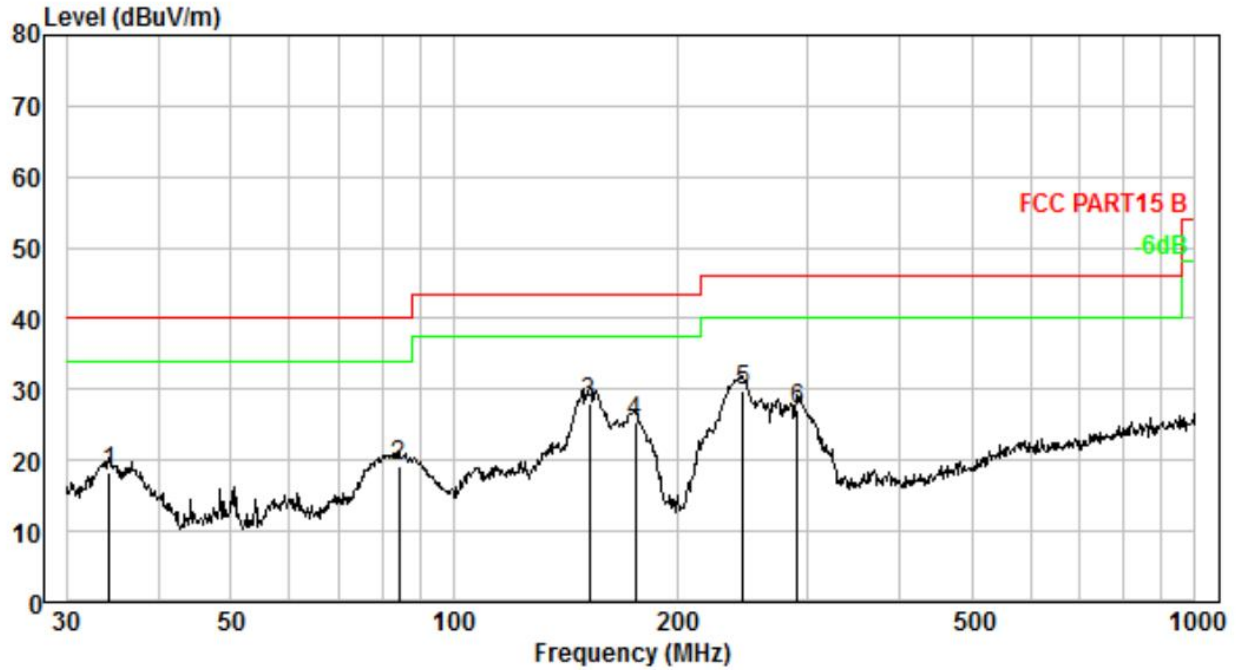
Please refer to the following diagram:

Vertical:



No.	Freq MHz	Cable Loss dB	ANT Factor dB/m	Receiver Reading dBuV	Preamp Factor dB	Emission Level dBuV/m	Limit dBuV/m	Over Limit dB	Remark
1.	34.037	1.42	12.11	52.34	29.90	35.97	40.00	-4.03	QP
2.	67.675	2.60	10.51	34.08	29.95	17.24	40.00	-22.76	QP
3.	152.130	3.99	13.80	40.83	30.02	28.60	43.50	-14.90	QP
4.	245.090	4.81	12.37	41.16	30.18	28.16	46.00	-17.84	QP
5.	291.036	5.11	13.08	36.93	30.30	24.82	46.00	-21.18	QP
6.	586.844	6.31	18.65	29.17	31.00	23.13	46.00	-22.87	QP

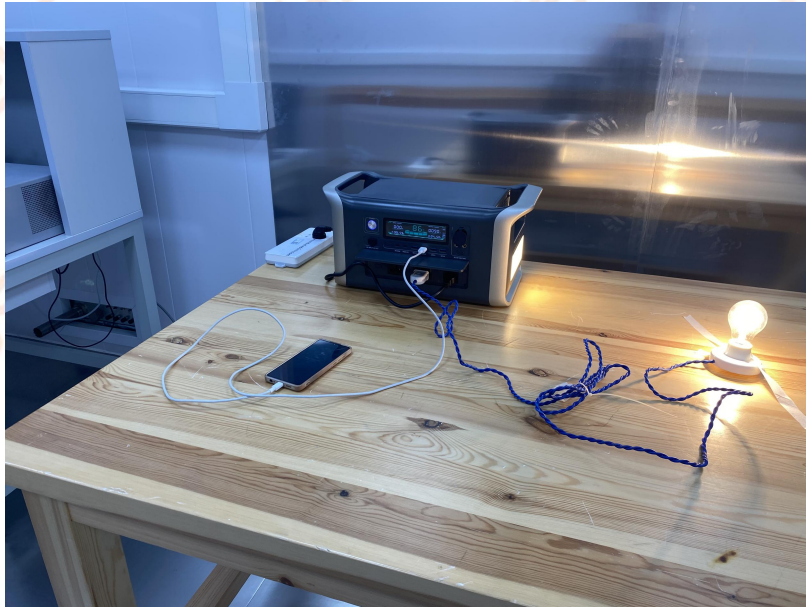
Horizontal:



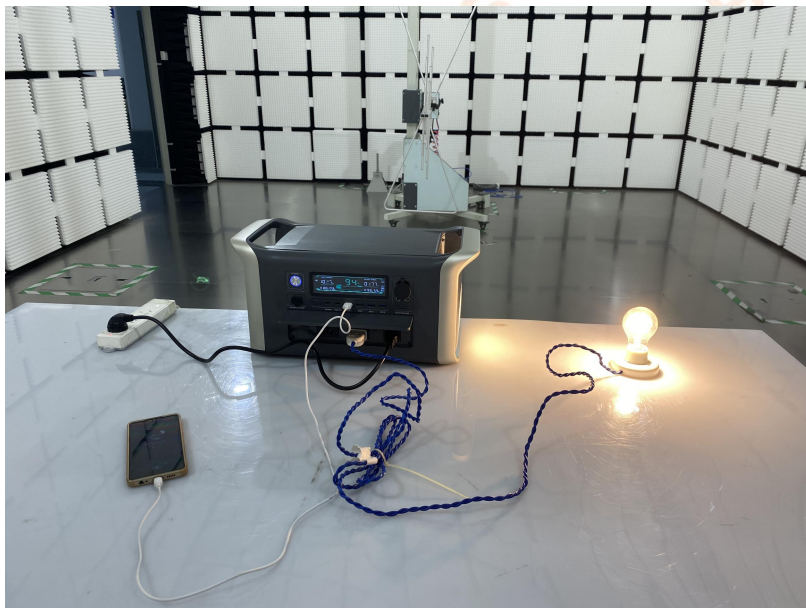
No.	Freq MHz	Cable Loss dB	ANT Factor dB/m	Receiver Reading dBuV	Preamp Factor dB	Emission Level dBuV/m	Limit dBuV/m	Over Limit dB	Remark
1.	34.276	1.43	12.13	34.79	29.90	18.45	40.00	-21.55	QP
2.	84.405	2.98	8.73	37.57	29.97	19.31	40.00	-20.69	QP
3.	152.130	3.99	13.80	40.41	30.02	28.18	43.50	-15.32	QP
4.	175.652	4.24	12.83	38.24	30.03	25.28	43.50	-18.22	QP
5.	245.951	4.82	12.39	42.85	30.18	29.88	46.00	-16.12	QP
6.	291.036	5.11	13.08	39.36	30.30	27.25	46.00	-18.75	QP

## 9. PHOTOGRAPHS OF THE TEST CONFIGURATION

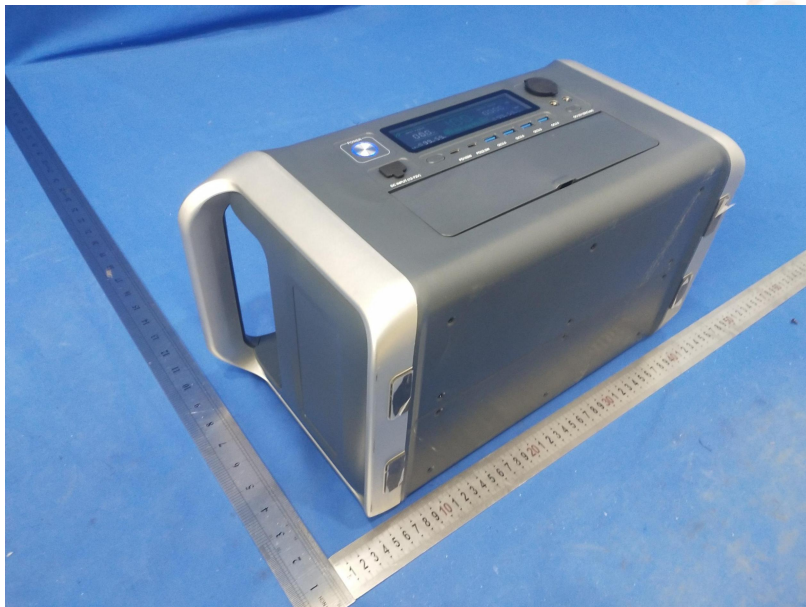
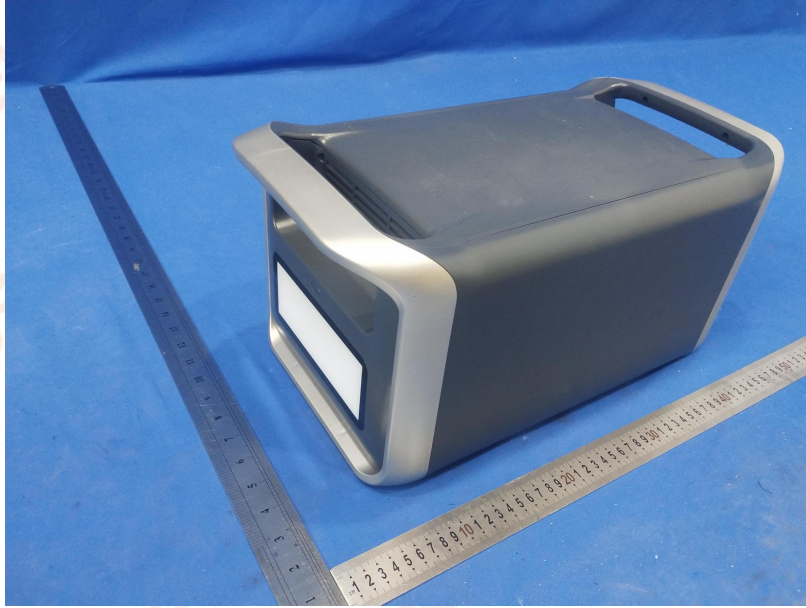
### CONDUCTED EMISSION TEST



### RADIATED EMISSION TEST



## 10. PHOTOGRAPHS OF EUT





## 11. LABELING REQUIREMENTS

According to FCC Part 15 Section 15.19, a device subject to certification or Supplier's Declaration of Conformity shall be labelled as follows:

**“This device complies with part 15 of the FCC Rules. Operation is subject to the following two conditions: (1) This device may not cause harmful interference, and (2) this device must accept any interference received, including interference that may cause undesired operation.”**

The device shall bear the statement in a conspicuous location on the device.

Devices subject to authorization under Supplier's Declaration of Conformity may be labeled with the FCC logo on a voluntary basis as a visual indication that the product complies with the applicable FCC requirements.

Note: The Commission concluded that if the labeling and regulatory information cannot be displayed to the intended recipient “in a manner that effects its purpose,” the device is incapable of digitally displaying the required information as required by the E-LABEL Act. Electronic labeling information must be electronically displayed in a manner that is “clearly legible without the aid of magnification” Similarly, because electronic labels cannot be easily removed or replaced if they are to be effective, manufacturers that choose to display required labeling information electronically must ensure that the information may not be removed or modified by anyone other than the responsible party.

## 12. INFORMATION TO USER

If a product must be tested and authorized under Supplier's Declaration of Conformity, a compliance information statement shall be supplied with product at the time of marketing or importation, containing the following information:

- (1) Identification of the product, e.g., name and model number;
- (2) A compliance statement as applicable, e.g., for devices subject to part 15 of this chapter as specified in 15.19(a)(3) of this chapter, that the product complies with the rules; and
- (3) The identification, by name, address and telephone number or Internet contact information, of the responsible party. The responsible party for Supplier's Declaration of Conformity must be located within the United States.

According to FCC Part 15 section 15.21, the users manual or instruction manual for an intentional or unintentional radiator shall caution the user that:

**"Changes or modifications not expressly approved by the party responsible for compliance could void the user's authority to operate the equipment".**

Also, refer to FCC Part 15 section 15.105, the instructions furnished the user shall include the following or similar statement, placed in a prominent location in the text of the manual:

**"Note: This equipment has been tested and found to comply with the limits for a Class B digital device, pursuant to part 15 of the FCC Rules. These limits are designed to provide reasonable protection against harmful interference in a residential installation. This equipment generates uses and can radiate radio frequency energy and, if not installed and used in accordance with the instructions, may cause harmful interference to radio communications. However, there is no guarantee that interference will not occur in a particular installation. If this equipment does cause harmful interference to radio or television reception, which can be determined by turning the equipment off and on, the user is encouraged to try to correct the interference by one or more of the following measures:**

- Reorient or relocate the receiving antenna.
- Increase the separation between the equipment and receiver.
- Connect the equipment into an outlet on a circuit different from that to which the receiver is connected.
- Consult the dealer or an experienced radio/TV technician for help."

— End of report —